

方向控制閥 (液控單向閥)

DIRECTIONAL CONTROL VALVE (Pilot controlled check valves)

- CPDT 系列液控單向閥，通常只允許單方向之油液流通，反方向則無法流通。
- 當液控壓力到達時，油液可反方向流通。
- Pilot controlled check valve CPDT series is only allowed one-way flow normally, not allow for reversion.
- When pressure reaches, flow can be reversion.



CPDT-04. 06. 10

CPDF-10. 16

方向控制閥
液控單向閥
Directional Control Valve (Pilot controlled check valves)

型號意義 How to order :

CP D - T - 06 - ※ - E
1 2 3 4 5 6

1	系列號	Series
2	無記號:單向閥 D:有泄壓閥的單向閥	No code: Pilot controlled check valve D: Decompression type pilot controlled check valve
3	T:管式連接 / F:法蘭連接	T: Threaded connection / F: Flange connection
4	口徑代號	Valve size 04:1/2", 06:3/4", 10:1-1/4"
5	開啓壓力	Cracking pressure Kgf/cm ²
6	無記號:內部回油 / E:外部回油	No code: Internal drain / E: External drain

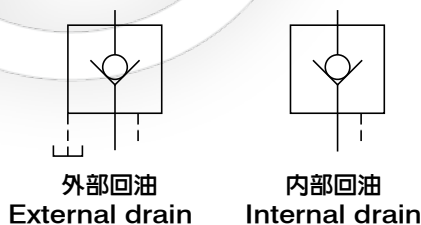
產品規格 Specification :

名稱 Name	口徑 Valve Size	型號 Model	開啓壓力 Max. Pressure (Kgf/cm ²)	最大流量 Max. Flow (ℓ/min)	重量 Weight (Kg)
液控單向閥 Pilot Controlled Check valves	1/2	CPDT-04	5: 3.5Kg 50: 5Kg	50	3
	3/4	CPDT-06		125	5.8
	1-1/4	CPDT-10		315	11.4
	1-1/4	CPDF-10		315	11.4
	2	CPDF-16		500	30

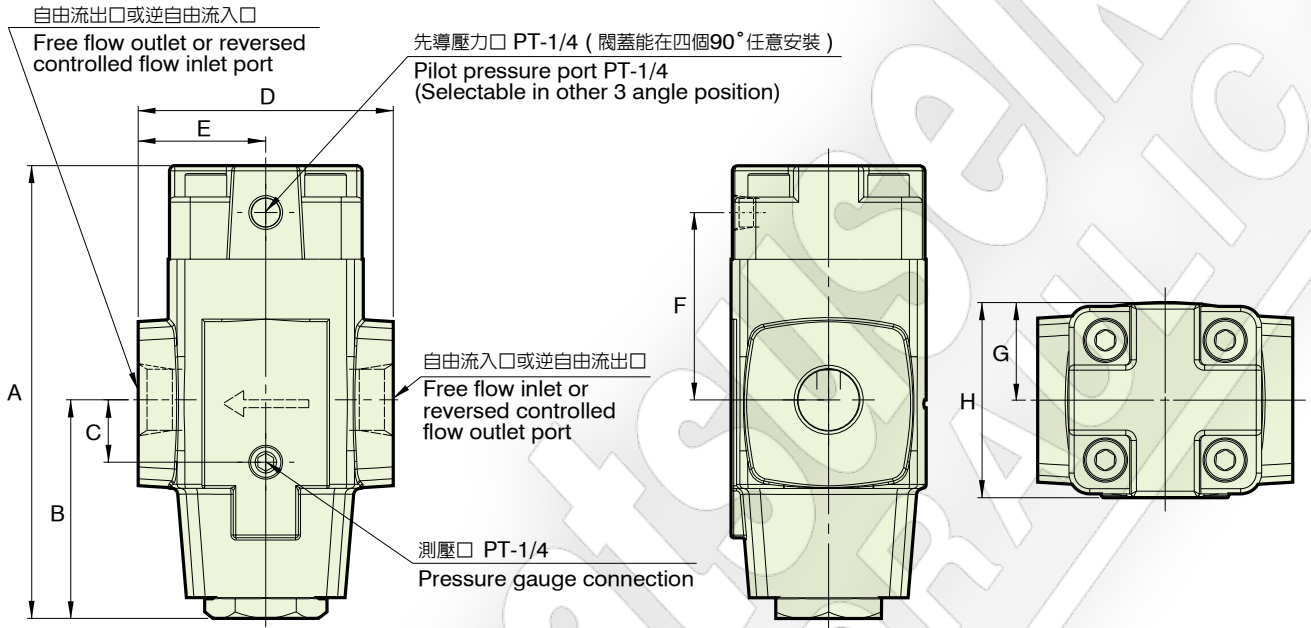
附件 Attachment :

型號 Model	安裝螺絲 Mounting bolts	O 型環 O-Ring	O 型法蘭 O-Flange
CPDF-16	M16 x 50L 8 支 piece	JIS B 2401-1B-G65 2 條 piece	2" 2 條 piece

圖形符號 Graphic symbol :



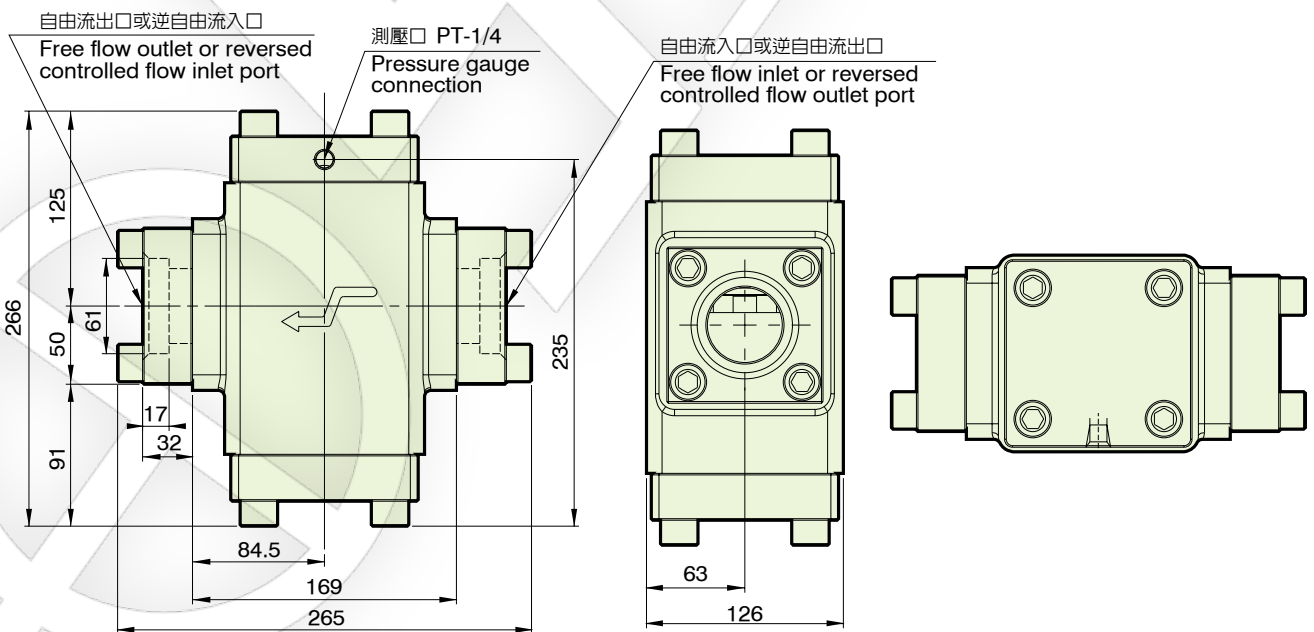
CPDF-04.06.10



單位 Unit : mm

型號 Model	A	B	C	D	E	F	G	H
CPDT-04	148	74	19	80	40	59	62	31
CPDT-06	174	84	24	98	49	72	75	37.5
CPDT-10	200	90.5	22.5	140	70	92.5	92	46

CPDT-16



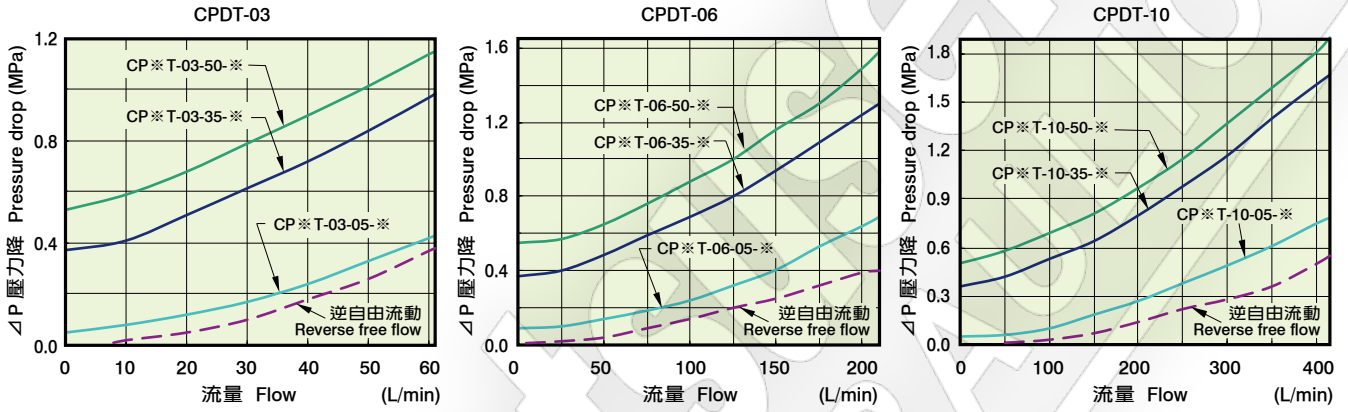
單位 Unit : mm

性能曲線圖 Performance curves

■ 流量-壓力特性曲線圖

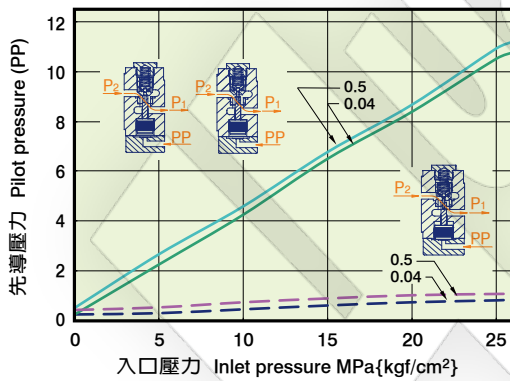
The characteristic curve chart of Flow vs. Pressure

使用油：黏度 Test fluid viscosity: 35mm²/s{cSt}



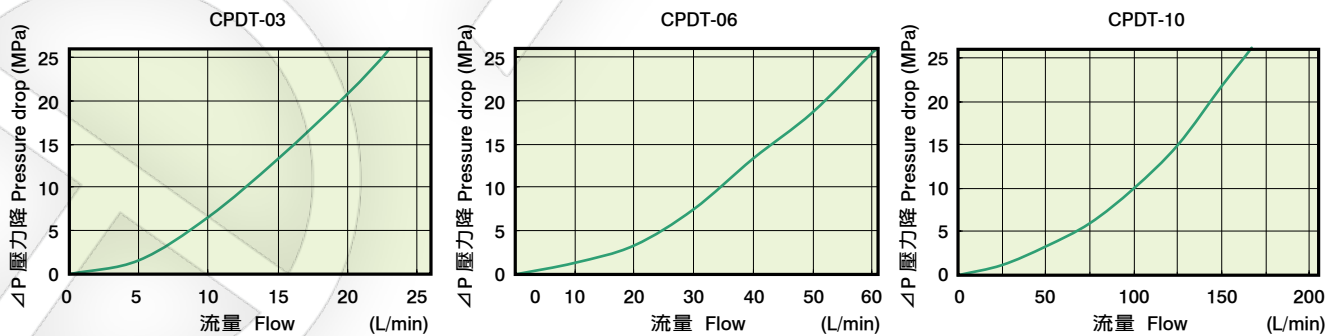
■ 最低先導壓力特性

Minimum pilot pressure characteristics



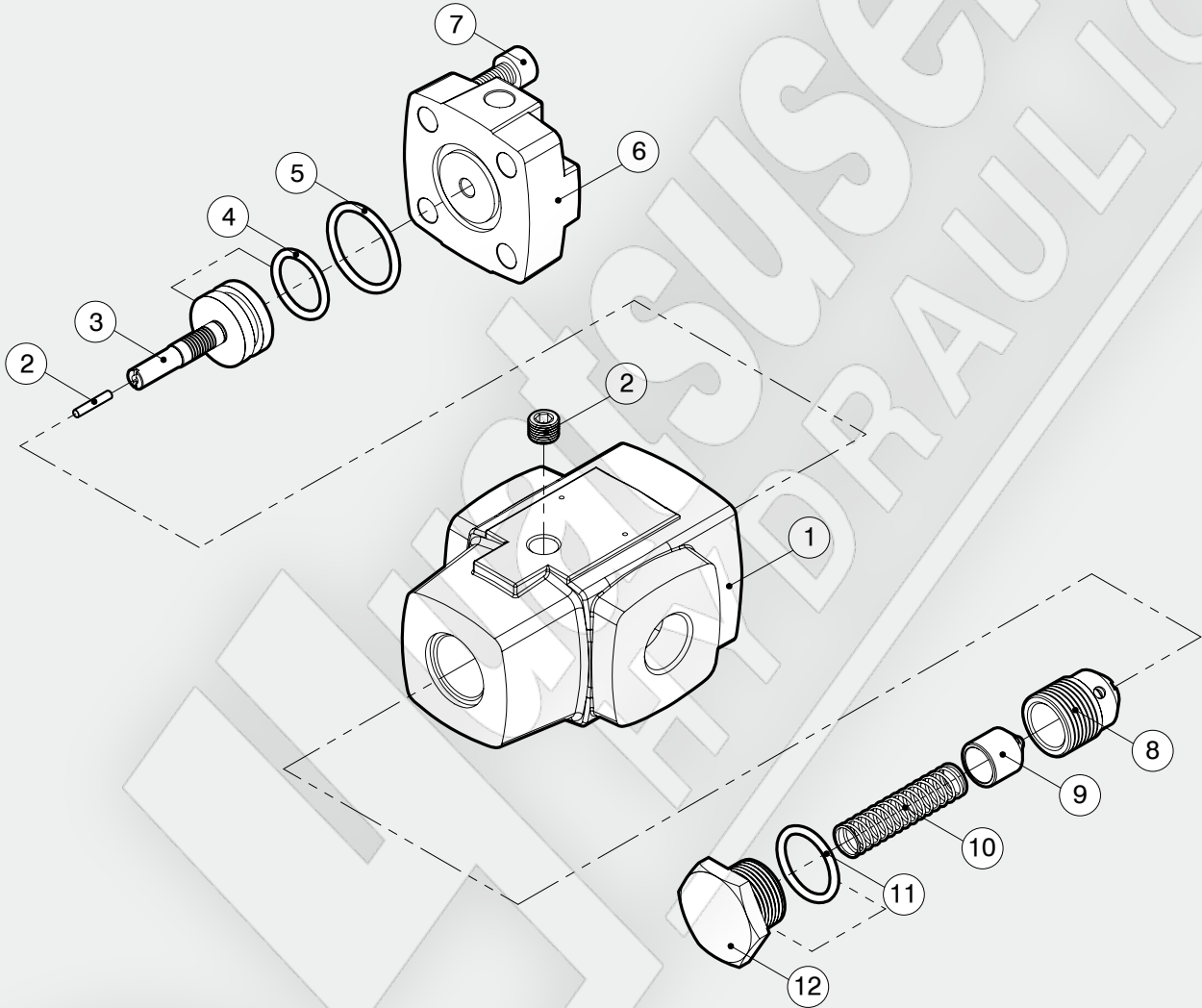
■ 第一段全開壓力降特性

Character of dropping pressure for First Level



爆炸圖 How to order for a complete assembled valve

CPDT-03.06.10



方向控制閥
液控單向閥
Directional Control Valve (Pilot controlled check valves)

項次編號 No.	品名 Name of parts	數量 Q
1	本體 Body	1
2	鋼棒 Just stick	1
3	推桿 Push rod	1
4	CPDT-03 JIS B 2401-1A-P18	1
	CPDT-06 JIS B 2401-1A-P25	1
	CPDT-10 JIS B 2401-1A-P34	1
5	CPDT-03 JIS B 2401-1B-G25	1
	CPDT-06 JIS B 2401-1B-P34	1
	CPDT-10 JIS B 2401-1B-P44	1
6	閥蓋 Cover	1

項次編號 No.	品名 Name of parts	數量 Q
7	CPDT-03 M8 x 35L	4
	CPDT-06 M10 x 35L	4
	CPDT-10 M12 x 40L	4
8	槍子閥 Check valve	1
9	球閥座 Check valve seat	1
10	彈簧 Spring	1
11	CPDT-03 JIS B 2401-1A-P24	1
	CPDT-06 JIS B 2401-1A-P28	1
	CPDT-10 JIS B 2401-1A-P40	1
12	螺母 Nut	1