

- DSHG 系列電磁換向閥之構造，是由方向控制閥和電磁閥組成。
- DSHG series solenoid operated directional valves is composed of directional control valves and solenoid.



DSHG-03
DSHG-04
DSHG-04-AB
DSHG-06
DSHG-06-AB
DSHG-10
DSHG-10-AB

型號意義 How to order :

DSHG 3C2 - 04 - AB - E - T

1 2 3 4 5 6

1	系列號	Series
2	心軸型號(參照135-137頁)	Spool type (P.135-137)
3	口徑代號	Valve size 03:3/8", 06:3/4"
4	微調把手	Fine-tune the handle
5	E:外部引導 / 無記號:內部引導	E: External Pilot / No code: Internal Pilot
6	T:內部回油 / 無記號:外部回油	T: Internal Drain / No code: External Drain

產品規格 Specification :

名稱 Name	口徑 Valve Size	型號 Model	最高使用壓力 Max. Pressure (Kgf/cm ²)	引導壓力 Pilot Pressure (Kgf/cm ²)	最大流量 Max. Flow (ℓ/min)	重量 Weight (Kg)
電磁換向閥 Solenoid operated directional control valve	3/8	DSHG-03	250	7~250	150	5.4
	1/2	DSHG-04		8~250	200	6.2
	1/2	DSHG-04-AB				8
	3/4	DSHG-06		8~250	500	12
	3/4	DSHG-06-AB				14
	1-1/4	DSHG-10		10~250	1100	50
	1-1/4	DSHG-10-AB			51.5	

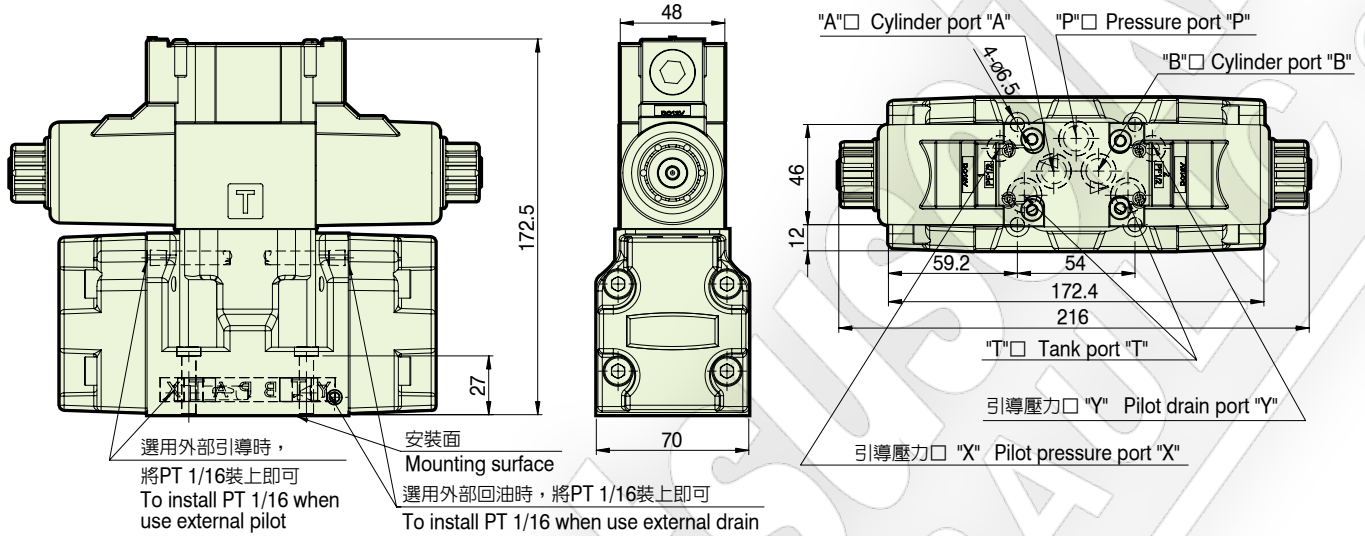
- ※ X, Y 為外部引導，外部回油。
- ※ X 為外部引導，內部回油。
- ※ Y 為內部引導，外部回油。
- ※ 此重量為不含電磁閥之淨重。

- ※ X, Y For External Pilot, External Drain.
- ※ X For External Pilot, Internal Drain.
- ※ Y For Internal Pilot, External Drain.
- ※ The weight excludes the N. W. of solenoid valve.

附件 Attachment :

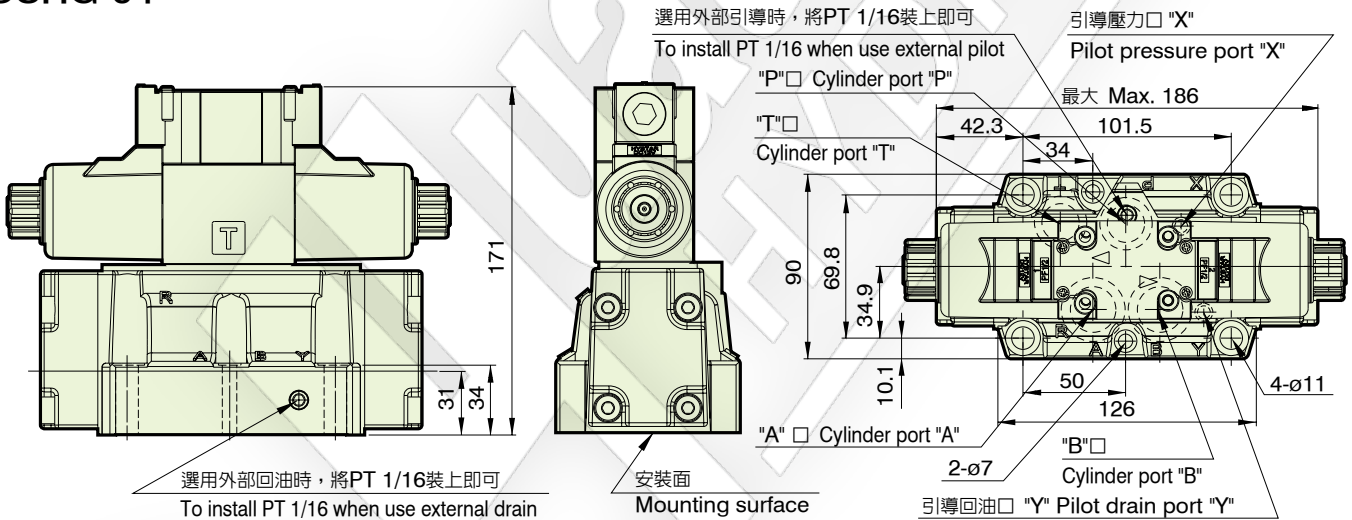
型號 Model	安裝螺絲 Mounting bolts		O 型環 O-Ring			
DSHG-03	M6 x 40L	4 支 piece	JIS B 2401-1B-P9	2 條 piece	JIS B 2401-1B-P12	5 條 piece
DSHG-04	M10 x 45L	4 支 piece	JIS B 2401-1B-P9	2 條 piece	JIS B 2401-1B-P22A	4 條 piece
DSHG-04-AB	M6 x 45L	2 支 piece	JIS B 2401-1B-P9	2 條 piece	JIS B 2401-1B-P22A	4 條 piece
DSHG-06	M12 x 55L	6 支 piece	JIS B 2401-1B-P14	2 條 piece	JIS B 2401-1B-P32	4 條 piece
DSHG-06-AB			JIS B 2401-1B-P14	2 條 piece	JIS B 2401-1B-P32	4 條 piece
DSHG-10	M20 x 75L	6 支 piece	JIS B 2401-1B-P20	2 條 piece	JIS B 2401-1B-P42	4 條 piece
DSHG-10-AB			JIS B 2401-1B-P20	2 條 piece	JIS B 2401-1B-P42	4 條 piece

DSHG-03



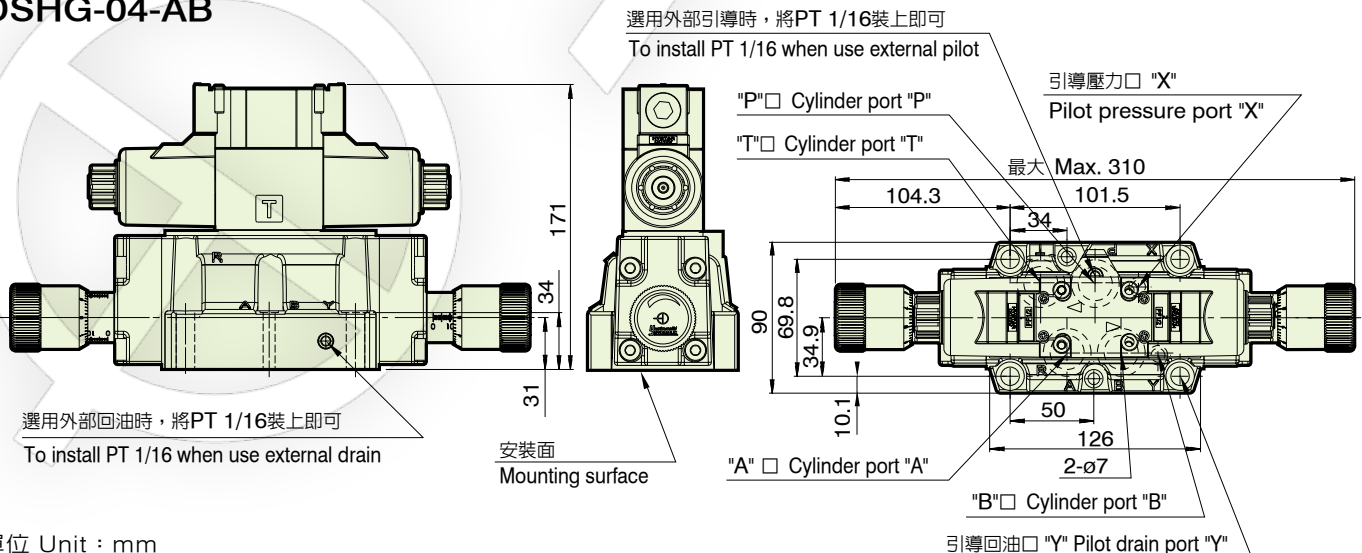
單位 Unit : mm

DSHG-04



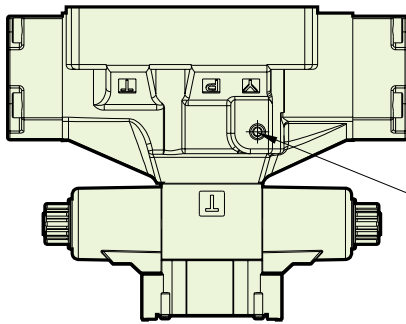
單位 Unit : mm

DSHG-04-AB

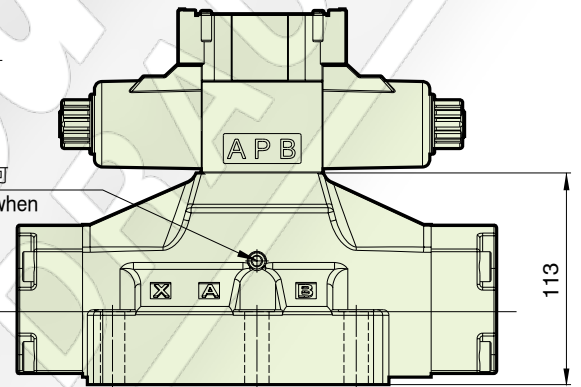
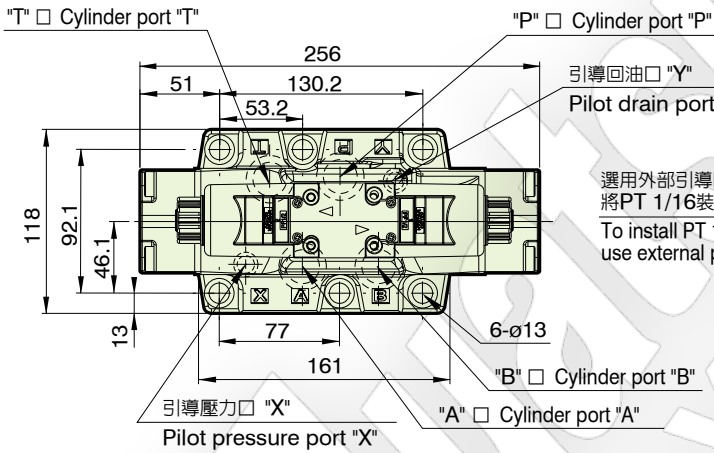
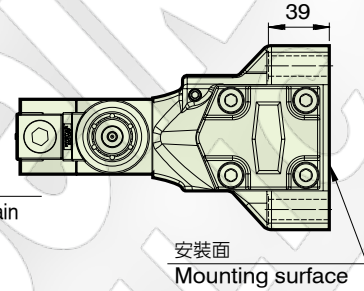


單位 Unit : mm

DSHG-06

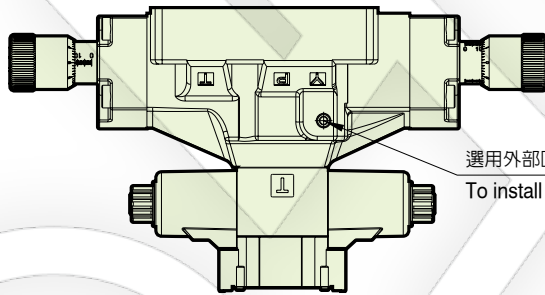


選用外部回油時，將PT 1/16裝上即可
To install PT 1/16 when use external drain

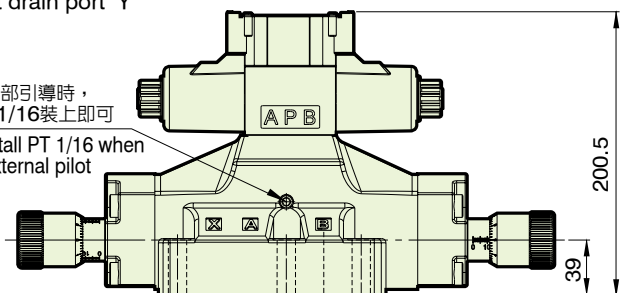
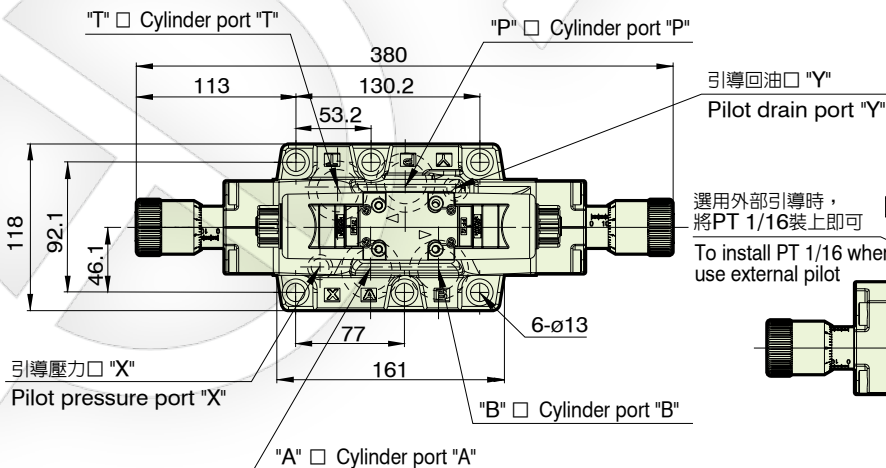
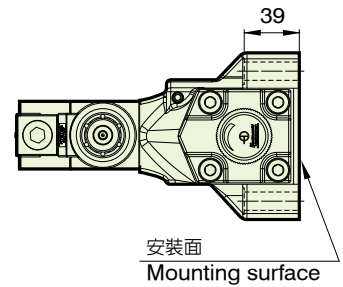


單位 Unit : mm

DSHG-06-AB

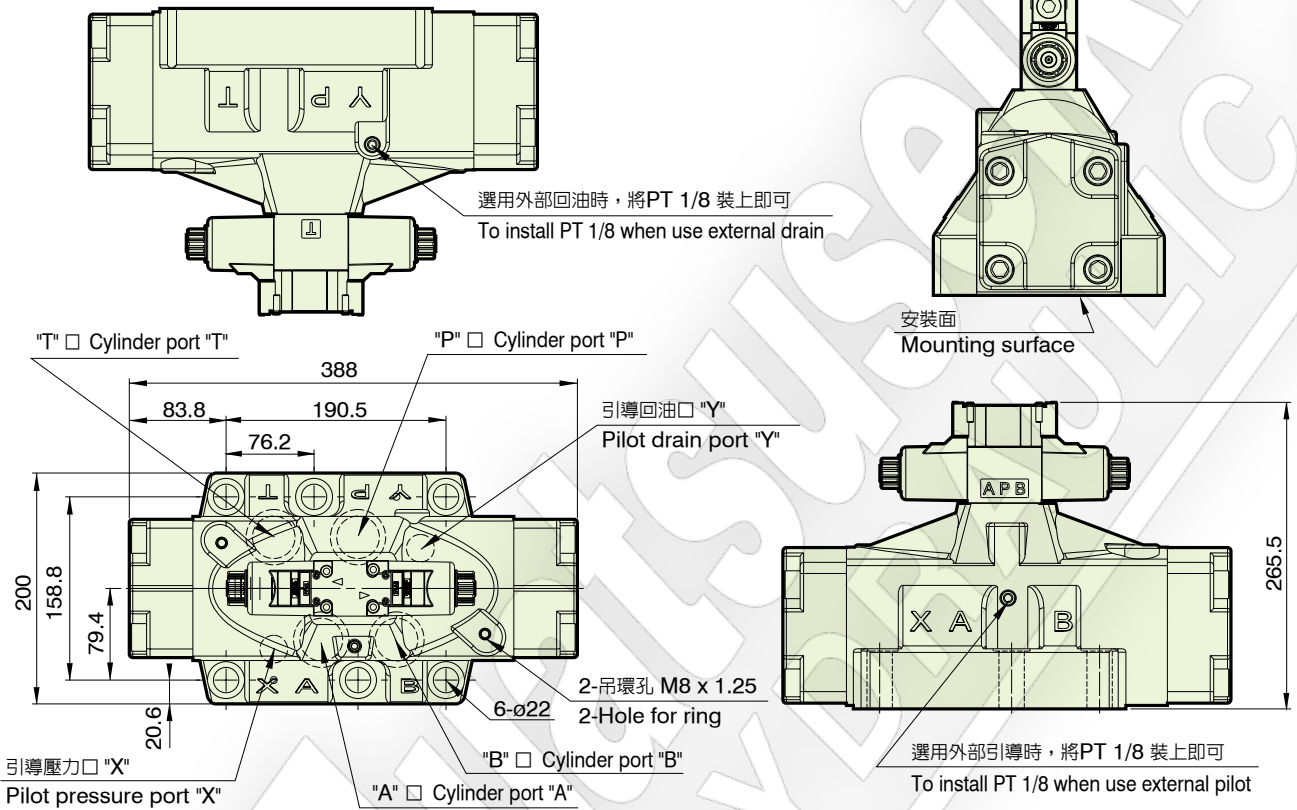


選用外部回油時，將PT 1/16 裝上即可
To install PT 1/16 when use external drain



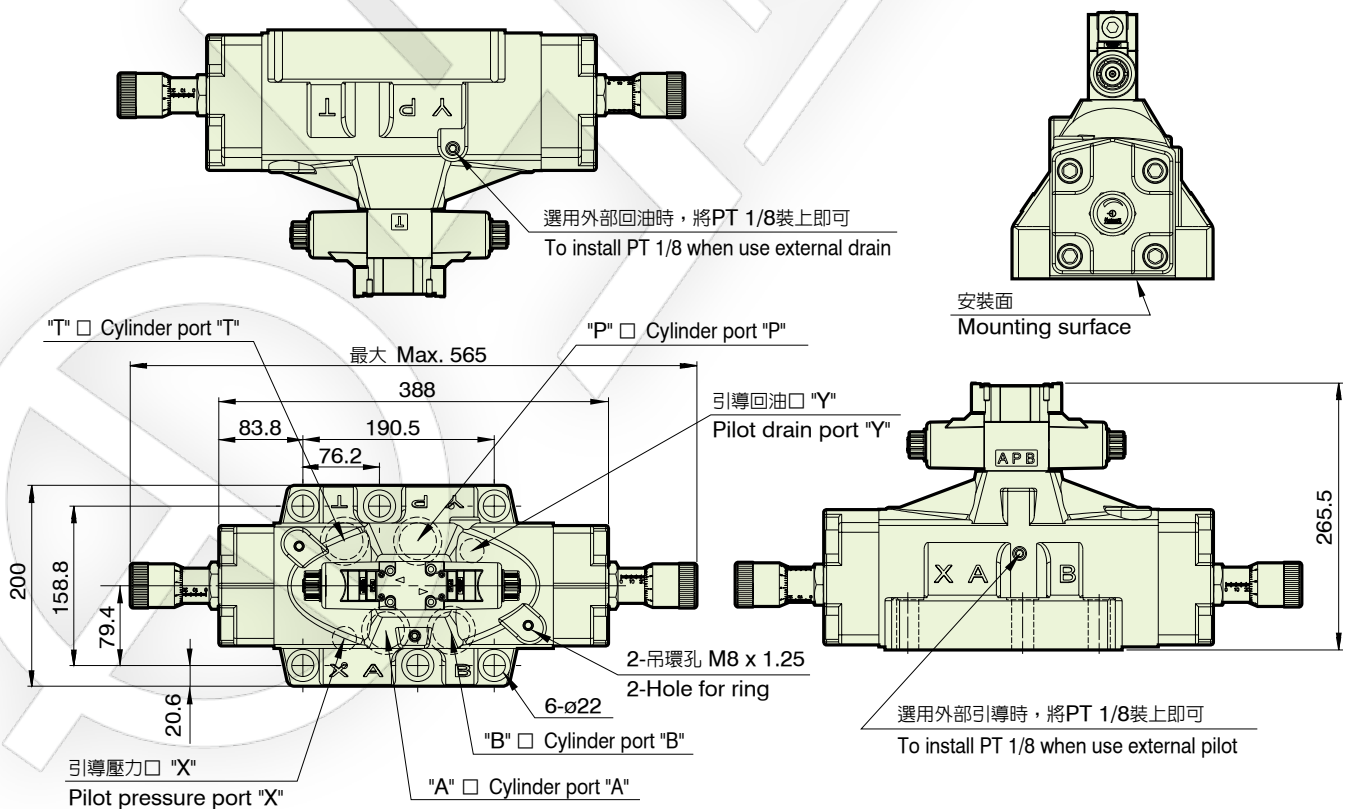
單位 Unit : mm

DSHG-10



單位 Unit : mm

DSHG-10-AB



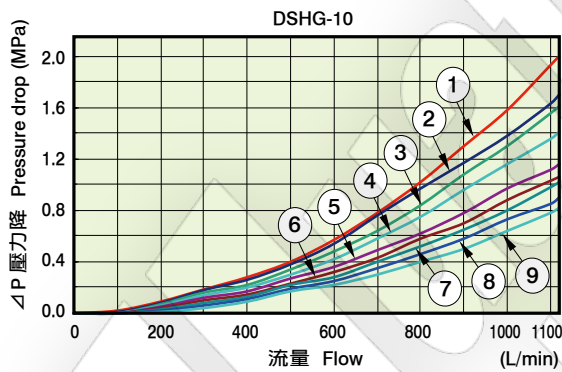
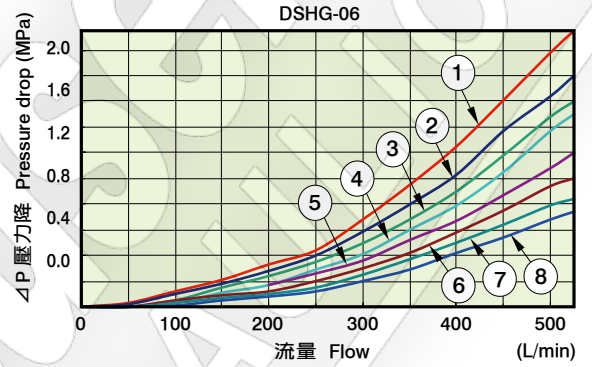
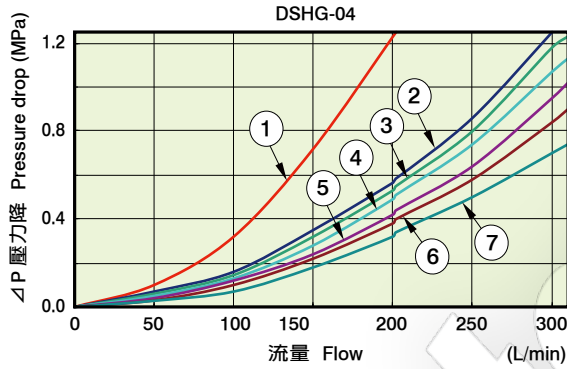
單位 Unit : mm

性能曲線圖 Performance curves

■ 流量-壓力特性曲線圖

The characteristic curve chart of Flow vs. Pressure

使用油：黏度 Test fluid viscosity: 30mm²/s{cSt}



方向控制閥 電磁換向閥
Directional Control Valve (Solenoid operated directional control valve)

■ DSHG-04

閥蕊形式 Spool type	壓力降曲線型號 A Pressure drop curve numbers A				
	P→A	B→T	P→B	A→T	P→T
2	⑤	④	⑤	⑥	-
3	⑤	③	⑤	⑤	⑦
4	⑤	③	⑤	⑤	-
40	⑤	④	⑤	⑥	-
5	⑦	④	⑤	⑤	⑤
6	⑤	③	⑤	⑥	①

閥蕊形式 Spool type	壓力降曲線型號 A Pressure drop curve numbers A				
	P→A	B→T	P→B	A→T	P→T
60	⑦	⑤	⑦	⑦	②
7	⑤	④	⑤	⑥	-
9	⑤	④	⑤	⑥	-
10	⑤	②	⑤	⑥	-
11	⑥	④	⑤	⑥	-
12	⑤	④	⑤	⑤	-

閥蕊形式 Spool type	壓力降曲線型號 A Pressure drop curve numbers A				
	P→A	B→T	P→B	A→T	P→T
2	②	②	②	④	-
4	②	③	②	⑤	-
40	②	④	②	⑥	-

閥蕊形式 Spool type	壓力降曲線型號 A Pressure drop curve numbers A				
	P→A	B→T	P→B	A→T	P→T
60	⑥	④	⑥	⑦	②
10	②	②	②	④	-
12	②	②	②	⑤	-

■ DSHG-06

閥蕊形式 Spool type	壓力降曲線型號 A Pressure drop curve numbers A				
	P→A	B→T	P→B	A→T	P→T
2	8	5	8	7	-
3	6	4	6	7	4
4	8	5	8	7	-
40	8	5	8	7	-
5	8	4	5	7	1
6	5	3	5	4	1

閥蕊形式 Spool type	壓力降曲線型號 A Pressure drop curve numbers A				
	P→A	B→T	P→B	A→T	P→T
60	6	5	6	7	1
7	6	4	6	7	-
9	6	4	6	7	-
10	8	5	8	7	-
11	8	4	5	7	-
12	8	5	8	7	-

閥蕊形式 Spool type	壓力降曲線型號 A Pressure drop curve numbers A				
	P→A	B→T	P→B	A→T	P→T
2	6	1	6	2	-
4	6	2	6	2	-
40	8	5	8	7	-

閥蕊形式 Spool type	壓力降曲線型號 A Pressure drop curve numbers A				
	P→A	B→T	P→B	A→T	P→T
60	6	2	6	3	1
10	8	5	8	7	-
12	8	5	8	7	-

■ DSHG-10

閥蕊形式 Spool type	壓力降曲線型號 A Pressure drop curve numbers A				
	P→A	B→T	P→B	A→T	P→T
2	9	6	9	8	-
3	7	6	7	7	5
4	9	6	9	6	-
40	9	6	9	8	-
5	9	6	8	6	1
6	5	3	5	4	2

閥蕊形式 Spool type	壓力降曲線型號 A Pressure drop curve numbers A				
	P→A	B→T	P→B	A→T	P→T
60	8	5	8	5	2
7	7	6	7	7	-
9	7	6	7	8	-
10	9	5	9	8	-
11	9	6	8	7	-
12	9	7	9	6	-

閥蕊形式 Spool type	壓力降曲線型號 A Pressure drop curve numbers A				
	P→A	B→T	P→B	A→T	P→T
2	8	3	8	4	-
4	8	5	8	6	-
40	9	6	9	8	-

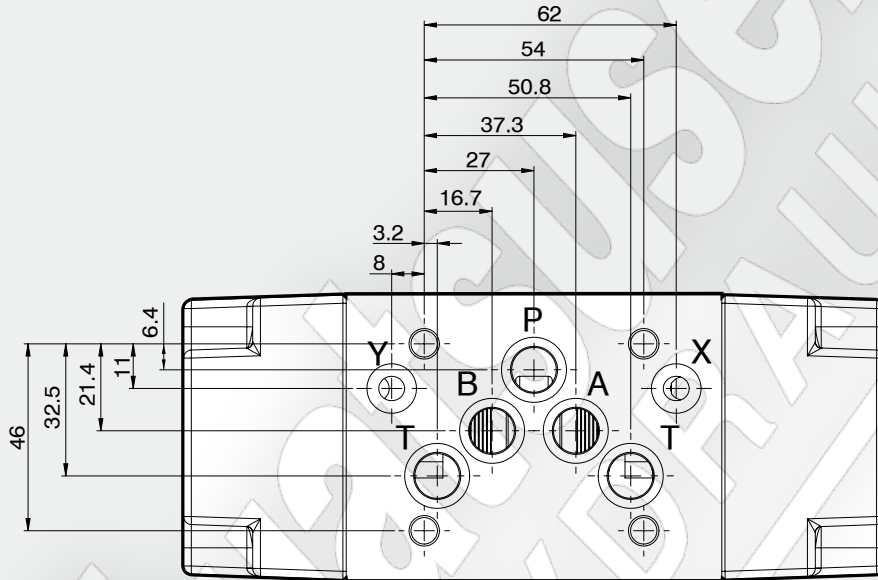
閥蕊形式 Spool type	壓力降曲線型號 A Pressure drop curve numbers A				
	P→A	B→T	P→B	A→T	P→T
60	8	4	8	4	2
10	9	5	9	8	-
12	9	7	9	6	-

■ 黏度係數表 Viscosity

黏度 Viscosity	mm ² /s{cSt}	15	20	30	40	50	60	70	80	90	100
係數 Coefficient	SSU	77	98	141	186	232	278	324	371	471	464
		0.81	0.87	0.96	1.03	1.09	1.14	1.19	1.23	1.27	1.30

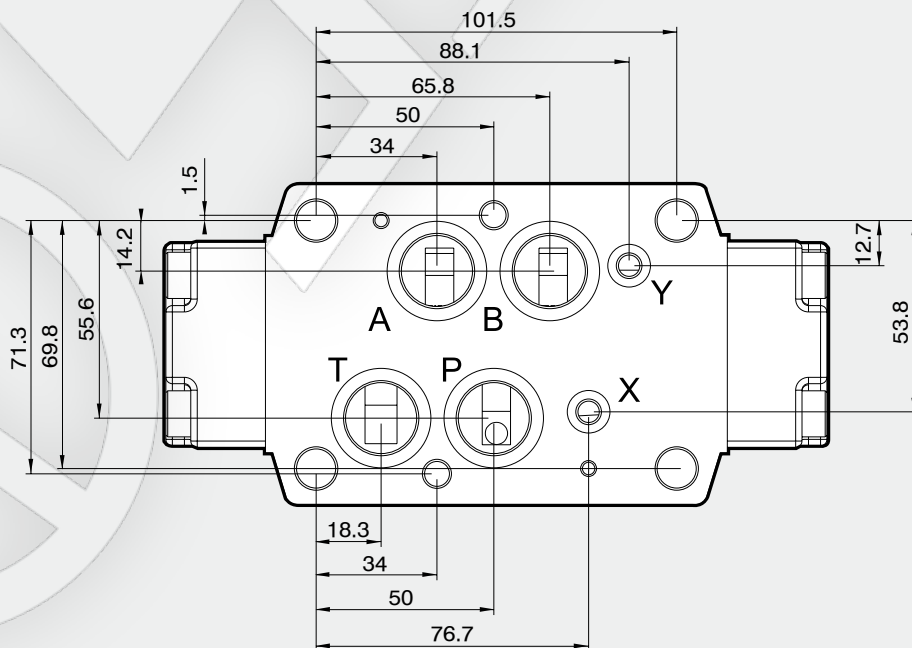
底版尺寸圖 Bottom plate dimensions

DSHG-03



單位 Unit : mm

DSHG-04

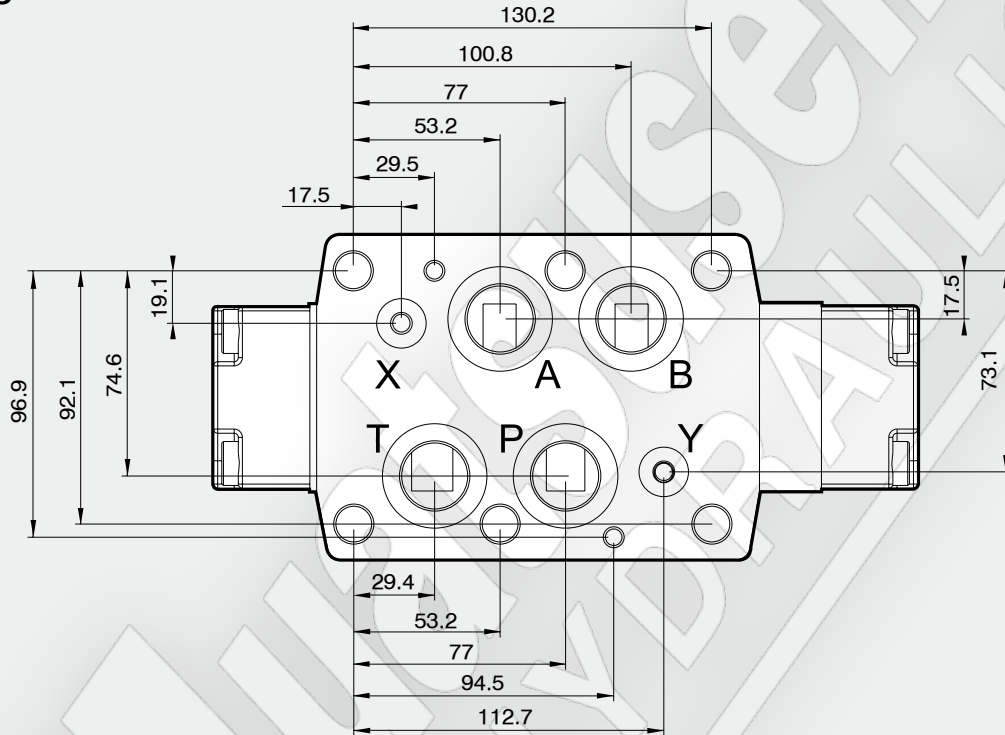


單位 Unit : mm

方向控制閥 電磁換向閥
Directional Control Valve (Solenoid operated directional control valve)

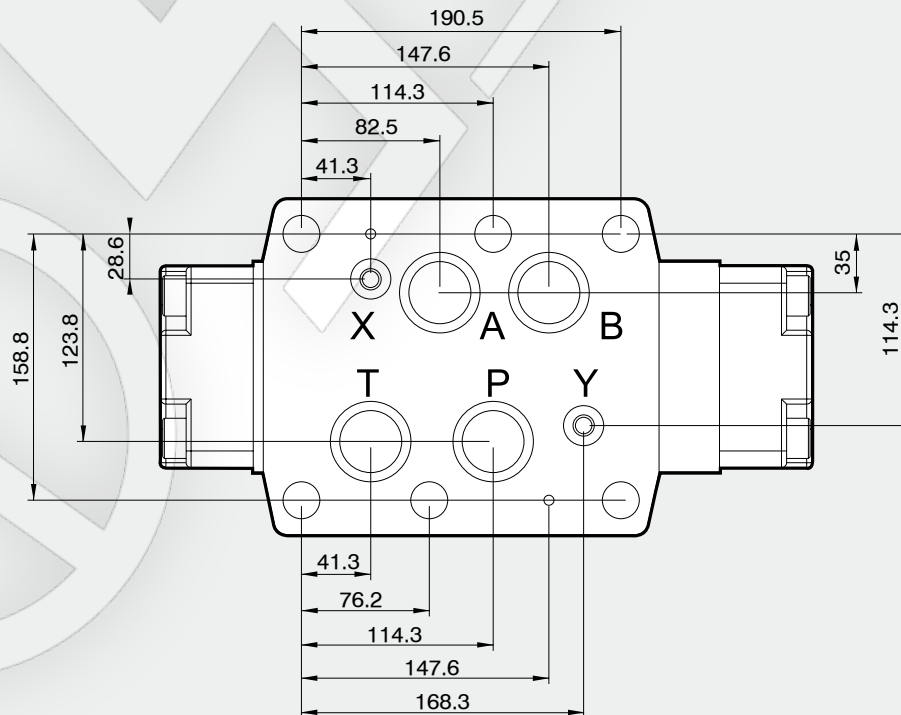
底版尺寸圖 Bottom plate dimensions

DSHG-06



單位 Unit : mm

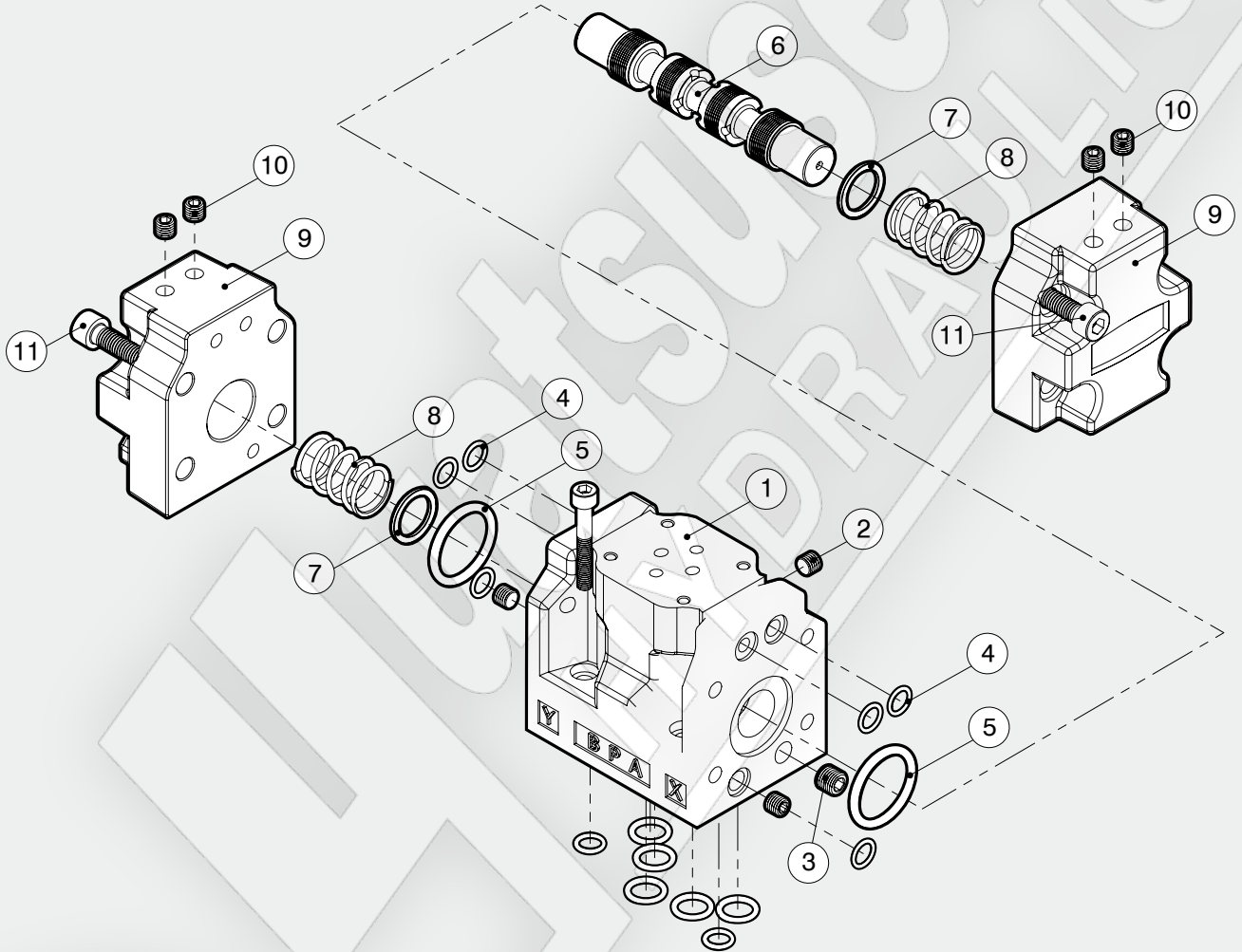
DSHG-10



單位 Unit : mm

爆炸圖 How to order for a complete assembled valve

DSHG-03



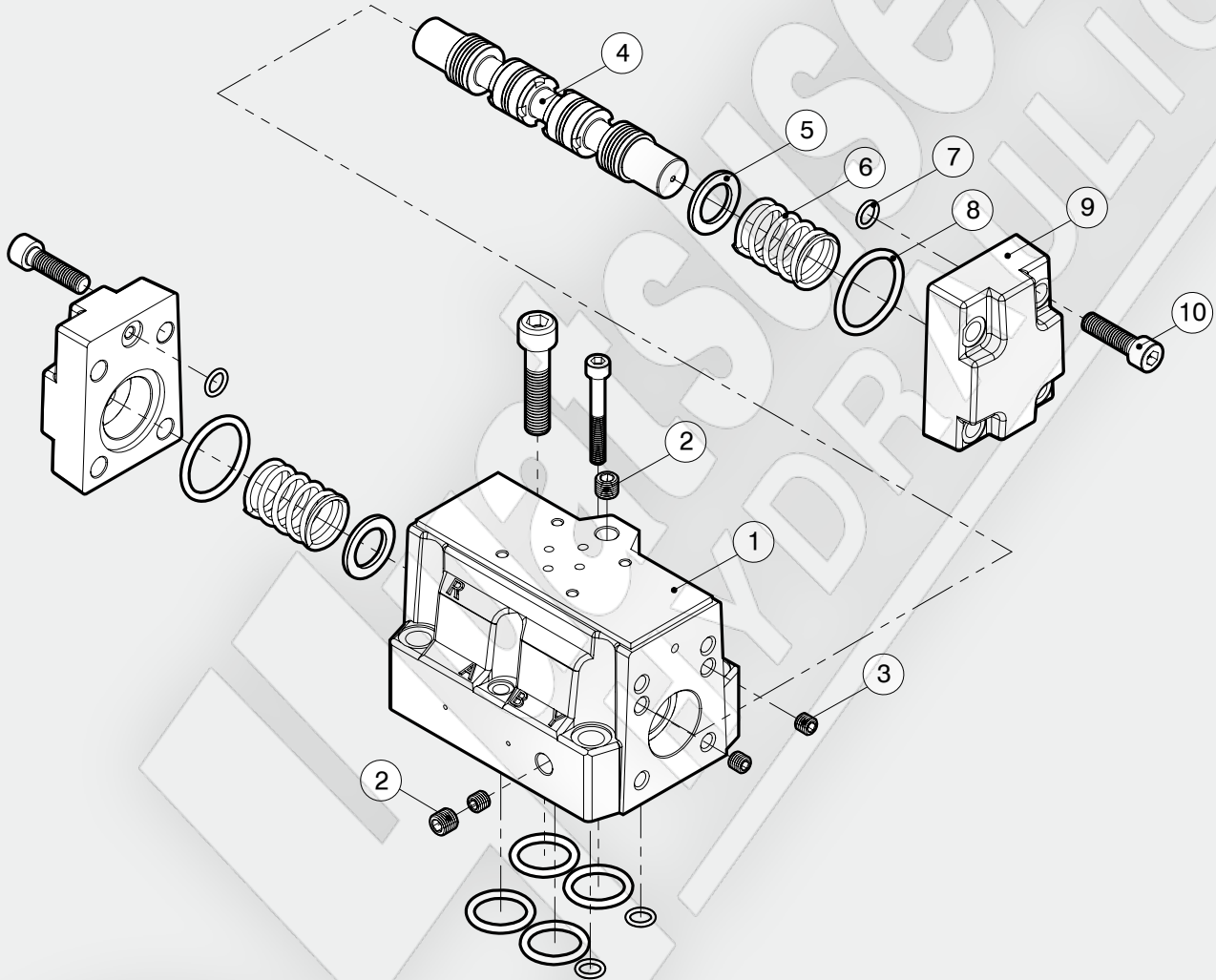
方向控制閥 電磁換向閥
 Directional Control Valve (Solenoid operated directional control valve)

項次編號 No.	品名 Name of parts	數量 Q
1	本體 Body	1
2	PT 1/16	3
3	PT 1/8	1
4	JIS B 2401-1B-P9	6
5	JIS B 2401-1B-P28	2
6	心軸 Spool	1

項次編號 No.	品名 Name of parts	數量 Q
7	墊片 Washer	2
8	彈簧 Spring	2
9	閥蓋 Cover	2
10	PT 1/16	4
11	M8 x 30L	8

爆炸圖 How to order for a complete assembled valve

DSHG-04

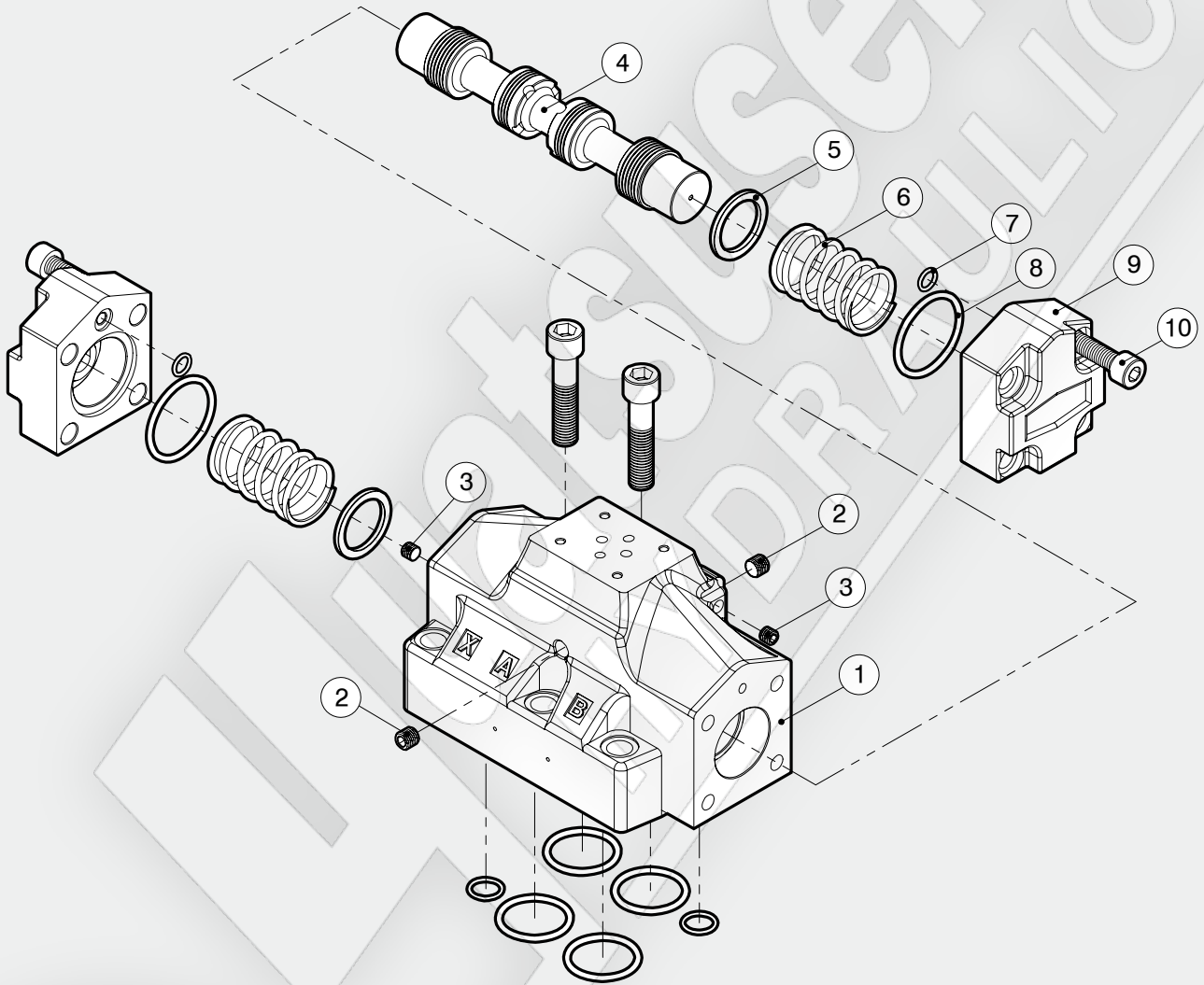


方向控制閥 電磁換向閥
Directional Control Valve (Solenoid operated directional control valve)

項次編號 No.	品名 Name of parts	數量 Q	項次編號 No.	品名 Name of parts	數量 Q
1	本體 Body	1	6	彈簧 Spring	2
2	PT 1/8	2	7	JIS B 2401-1B-P9	2
3	PT 1/16	3	8	JIS B 2401-1B-P32	2
4	心軸 Spool	1	9	閥蓋 Cover	2
5	墊片 Washer	2	10	M8 x 30L	8

爆炸圖 How to order for a complete assembled valve

DSHG-06



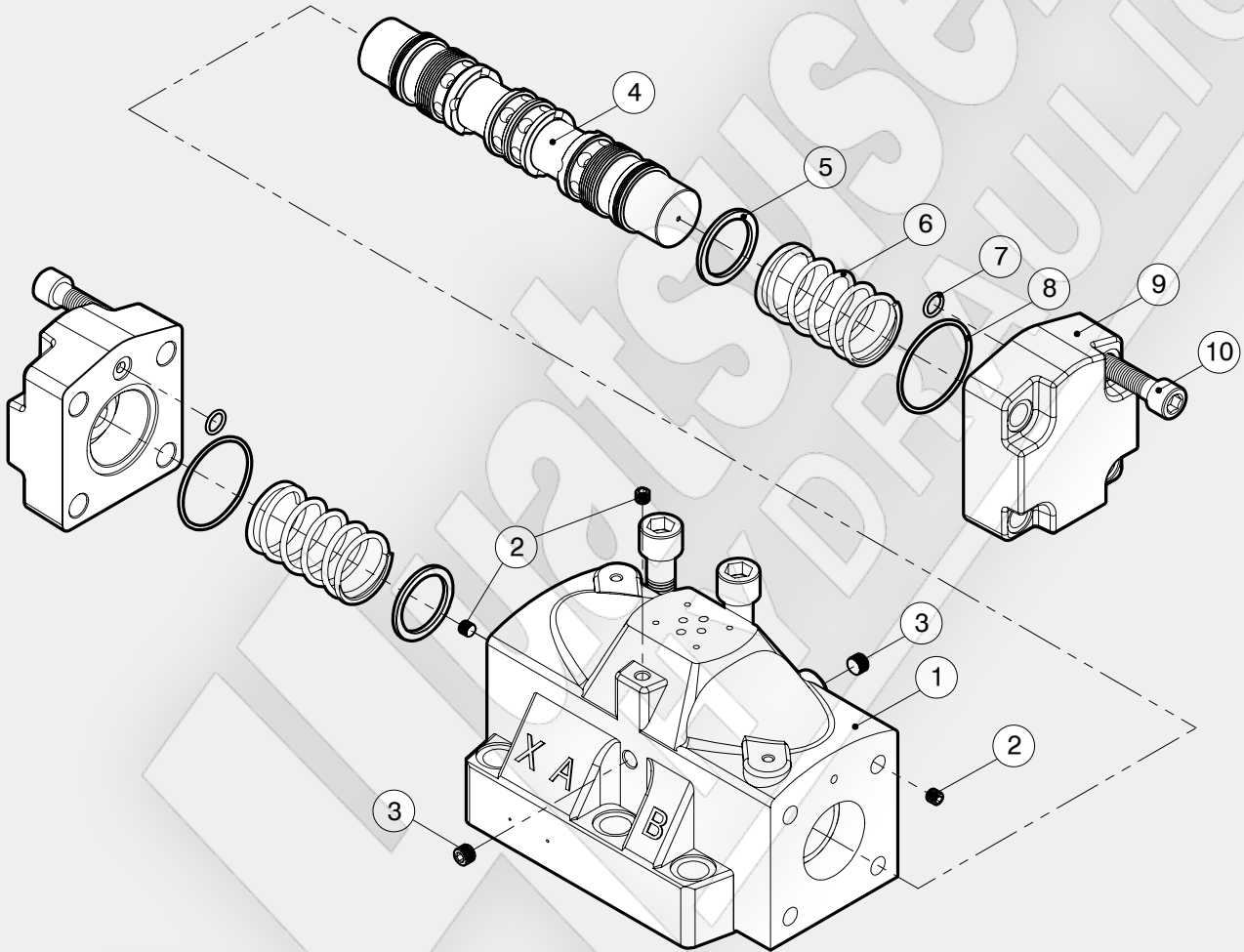
方向控制閥
Directional Control Valve (Solenoid operated directional control valve)
電磁換向閥

項次編號 No.	品名 Name of parts	數量 Q
1	本體 Body	1
2	PT 1/8	2
3	PT 1/16	2
4	心軸 Spool	1
5	墊片 Washer	2

項次編號 No.	品名 Name of parts	數量 Q
6	彈簧 Spring	2
7	JIS B 2401-1B-P9	2
8	JIS B 2401-1B-P32	2
9	閥蓋 Cover	2
10	M10 x 30L	8

爆炸圖 How to order for a complete assembled valve

DSHG-10



方向控制閥 電磁換向閥
Directional Control Valve (Solenoid operated directional control valve)

項次編號 No.	品名 Name of parts	數量 Q	項次編號 No.	品名 Name of parts	數量 Q
1	本體 Body	1	6	彈簧 Spring	2
2	PT 1/16	2	7	JIS B 2401-1B-P14	2
3	PT 1/8	2	8	JIS B 2401-1B-G65	2
4	心軸 Spool	1	9	閥蓋 Cover	2
5	墊片 Washer	2	10	M16 x 55L	8

心軸型式油壓符號 Spool type & graphic symbol :

 方向控制閥 電磁換向閥
 Directional Control Valve (Solenoid operated directional control valve)

三位置 彈簧中立 3 Positions Spring Centered	油壓符號(標準組立) Graphic Symbol (Standard)	二位置 彈簧復追 2 Positions Spring Offset	油壓符號(標準組立) Graphic Symbol (Standard)
3C2		2B2	
3C3		2B3	
3C4		2B4	
3C40		2B40	
3C5		2B7	
3C6		2B8	
3C60		2B29	
3C7			
3C8			
3C9			
3C10			
3C11			
3C12			
3C13			

心軸型式油壓符號 Spool type & graphic symbol :

三位置彈簧中立 3 Positions Spring Centered	油壓符號(標準組立) Graphic Symbol (Standard)	油壓符號(逆組立) Graphic Symbol (Reverse)
2B2A(L)		
2B3A(L)		
2B4A(L)		
2B40A(L)		
2B5A(L)		
2B6A(L)		
2B60A(L)		
2B7A(L)		
2B8A(L)		
2B9A(L)		
2B10A(L)		
2B11A(L)		
2B12A(L)		
2B29A(L)		



方向控制閥 電磁換向閥
Directional Control Valve (Solenoid operated directional control valve)

心軸型式油壓符號 Spool type & graphic symbol :

 方向控制閥 電磁換向閥
 Directional Control Valve (Solenoid operated directional control valve)

三位置彈簧中立 3 Positions Spring Centered	油壓符號(標準組立) Graphic Symbol (Standard)	油壓符號(逆組立) Graphic Symbol (Reverse)
2B2B(L)		
2B3B(L)		
2B4B(L)		
2B40B(L)		
2B5B(L)		
2B6B(L)		
2B60B(L)		
2B7B(L)		
2B8B(L)		
2B9B(L)		
2B10B(L)		
2B11B(L)		
2B12B(L)		
2B29B(L)		